

PK045

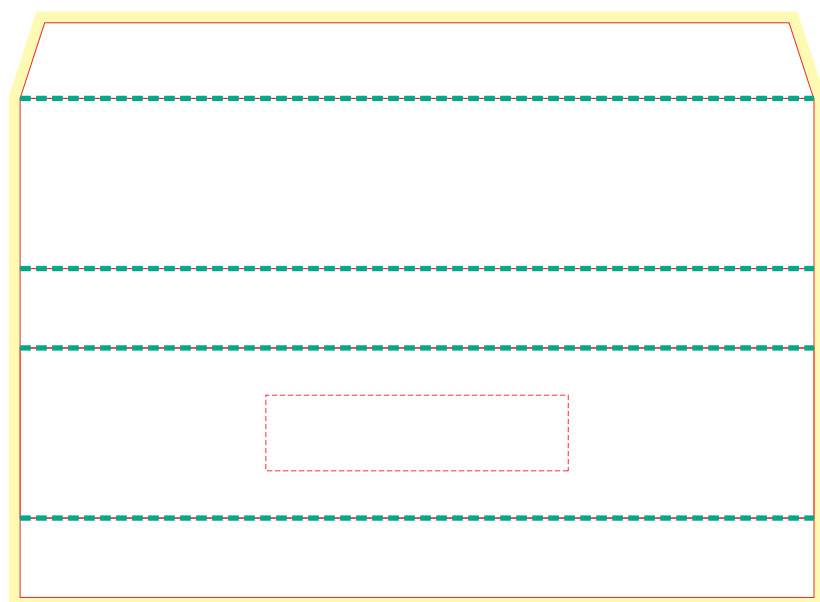
Cable Sliding Gift Box 2

Print Process: Debossed Foil Print (sleeve), 4CP Digital Print (sleeve and insert)

Product Size: 210 x 45 x 22 mm

Colours: Product Colour: Black, White

Box Sleeve



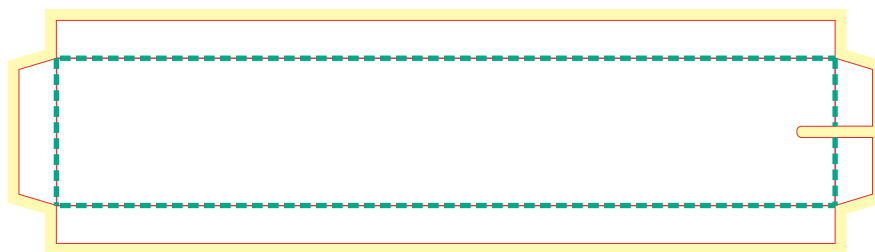
Custom Box Sleeve
 210mm x 45mm x 21mm
 4CP Print

Box Sleeve Front
 Print : 80 x 20mm
 Foil Stamping

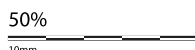


— Dye Line
 — Bleed (3mm)
 - - - Folds

Tray Inset



Custom Tray Inset
 206mm x 39mm
 4CP Print



Please follow these artwork guidelines: • Use and supply vector-based artwork • Illustrator compatible EPS or PDF with all fonts outlined • Indicate any critical colour details with the correct PMS colour • All Pantone colours need to be supplied as Pantone Coated (PMS C) colours • All details need to be “embedded” in the file, i.e. no linked artwork should be provided • Bleed is crucial when printing edge to edge. Artwork must extend beyond the finished and trim size dimensions.