

**PK044**

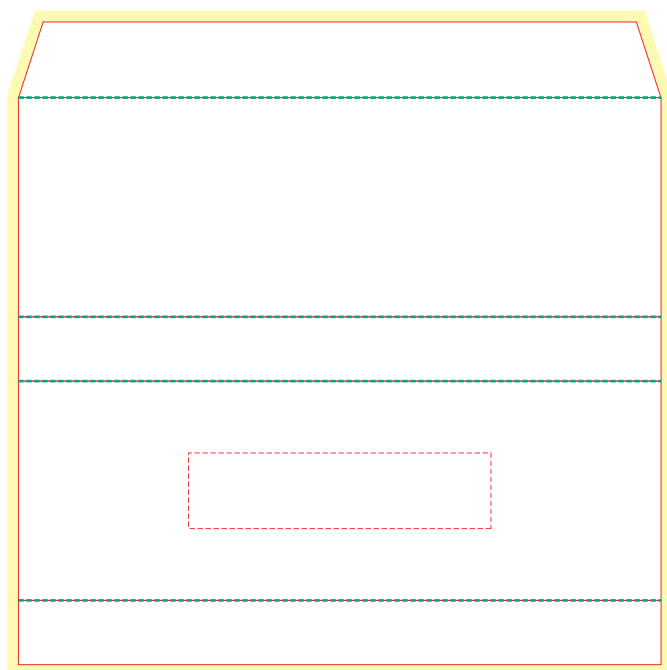
**Cable Sliding Gift Box 1**

**Print Process:** Debossed Foil Print (sleeve), 4CP Digital Print (sleeve and insert)

**Product Size:** 170 x 60 x 18 mm

**Colours:** Product Colour: Black, White

**Box Sleeve**

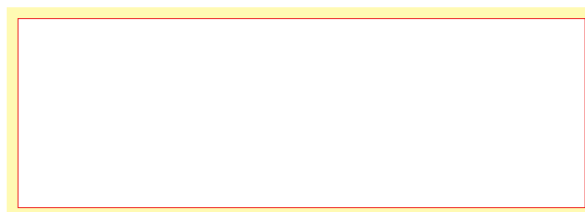


Custom Box Sleeve  
 170mm x 58mm x 17mm  
 4CP Print

Front  
 Print : 80 x 20mm  
 Foil Stamping



**Tray Inset**



Custom Box Inset  
 150mm x 50mm  
 4CP Print

— Dye Line  
 — Bleed (3mm)  
 - - - Folds



Please follow these artwork guidelines: • Use and supply vector-based artwork • Illustrator compatible EPS or PDF with all fonts outlined • Indicate any critical colour details with the correct PMS colour • All Pantone colours need to be supplied as Pantone Coated (PMS C) colours • All details need to be “embedded” in the file, i.e. no linked artwork should be provided • Bleed is crucial when printing edge to edge. Artwork must extend beyond the finished and trim size dimensions.