

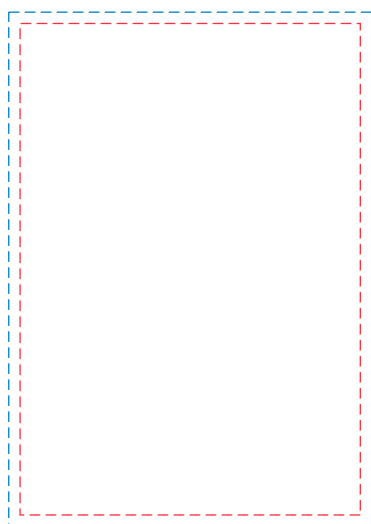
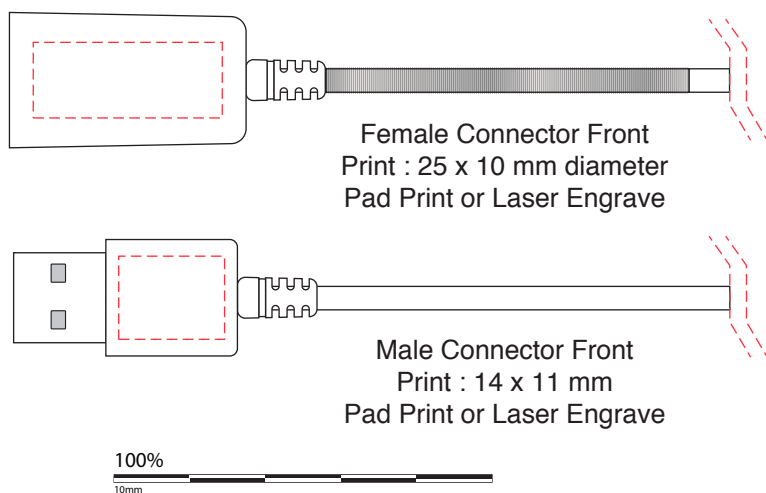
AR881

USB Extension Cable

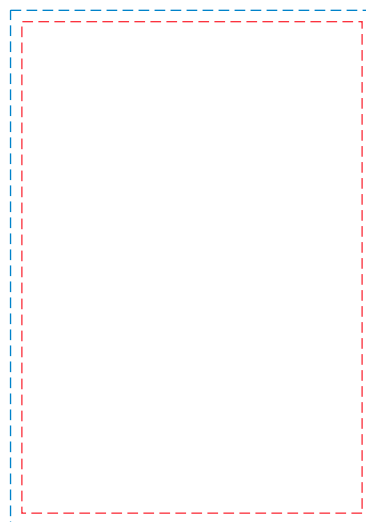
Print Process: Pad Print, Laser Engrave

Product Size: Cable Head: 31 x 18 x 10 mm, Cable Length: 100 cm

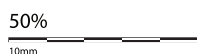
Colours: Product Colour: White



Backing Card Front
Print : 90 x 130 mm
(3mm Bleed)
4CP Print



Backing Card Rear
Print : 90 x 130 mm
(3mm Bleed)
4CP Print



Please follow these artwork guidelines: • Use and supply vector-based artwork • Illustrator compatible EPS or PDF with all fonts outlined • Indicate any critical colour details with the correct PMS colour • All Pantone colours need to be supplied as Pantone Coated (PMS C) colours • All details need to be “embedded” in the file, i.e. no linked artwork should be provided • Bleed is crucial when printing edge to edge. Artwork must extend beyond the finished and trim size dimensions.

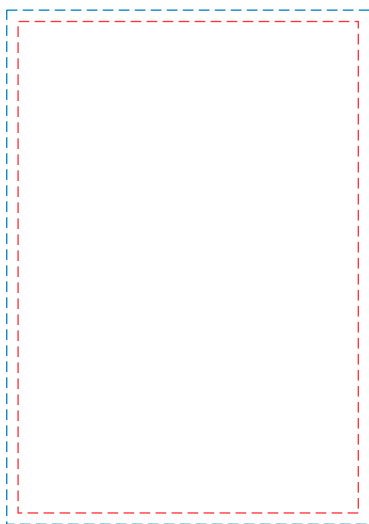
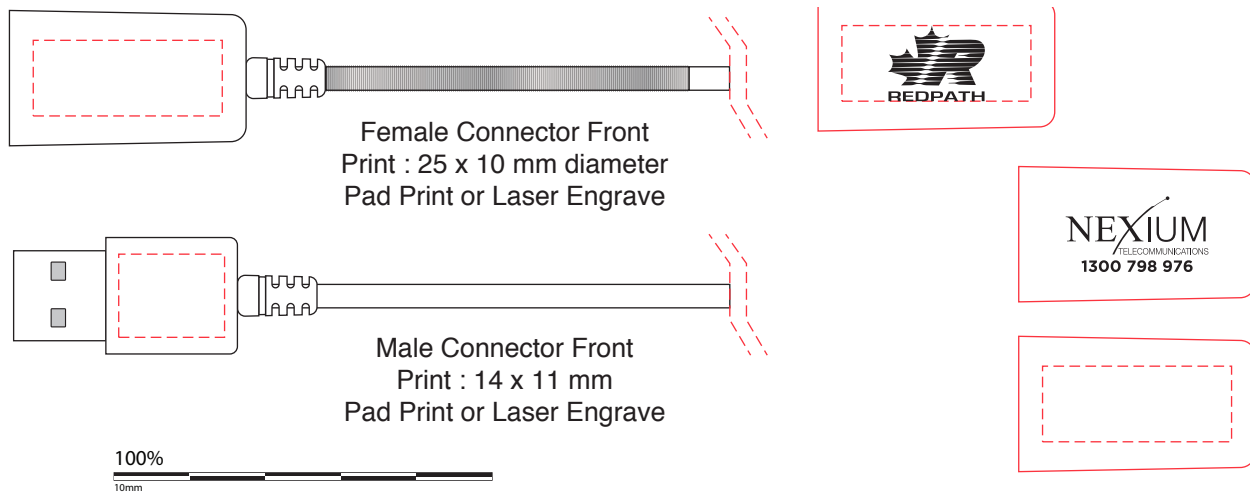
AR881

USB Extension Cable

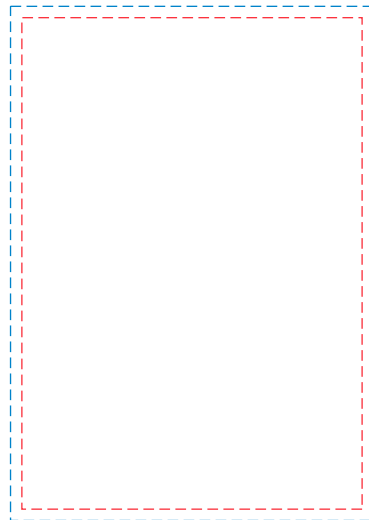
Print Process: Pad Print, Laser Engrave

Product Size: Cable Head: 31 x 18 x 10 mm, Cable Length: 100 cm

Colours: Product Colour: White



Backing Card Front
 Print : 90 x 130 mm
 (3mm Bleed)
 4CP Print



Backing Card Rear
 Print : 90 x 130 mm
 (3mm Bleed)
 4CP Print



Please follow these artwork guidelines: • Use and supply vector-based artwork • Illustrator compatible EPS or PDF with all fonts outlined • Indicate any critical colour details with the correct PMS colour • All Pantone colours need to be supplied as Pantone Coated (PMS C) colours • All details need to be “embedded” in the file, i.e. no linked artwork should be provided • Bleed is crucial when printing edge to edge. Artwork must extend beyond the finished and trim size dimensions.

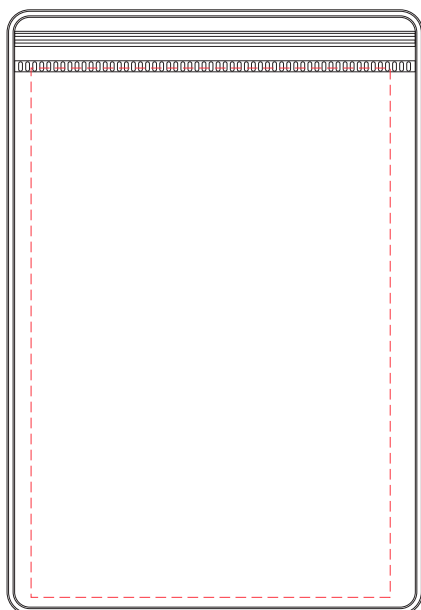
AR881

USB Extension Cable

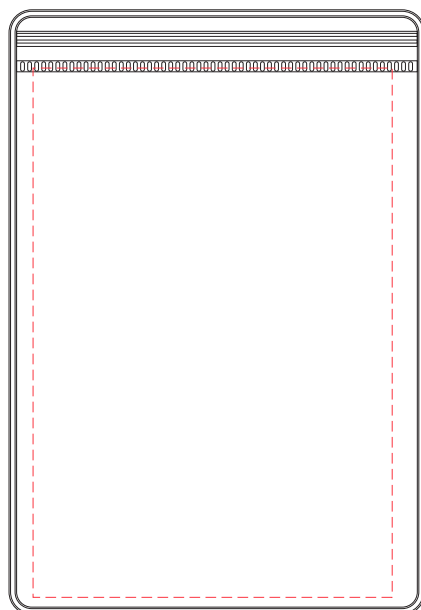
Print Process: Pad Print, Laser Engrave

Product Size: Cable Head: 31 x 18 x 10 mm, Cable Length: 100 cm

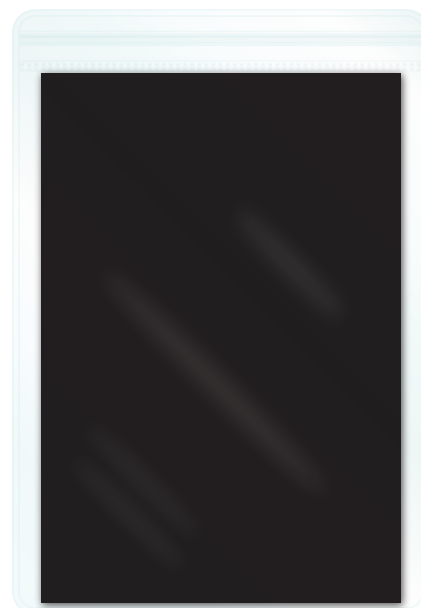
Colours: Product Colour: White



Front
Print : 95 x 140 mm
4 Colour Process
(3 mm Bleed)



Rear
Print : 95 x 140 mm
4 Colour Process
(3 mm Bleed)



Please follow these artwork guidelines: • Use and supply vector-based artwork • Illustrator compatible EPS or PDF with all fonts outlined • Indicate any critical colour details with the correct PMS colour • All Pantone colours need to be supplied as Pantone Coated (PMS C) colours • All details need to be “embedded” in the file, i.e. no linked artwork should be provided • Bleed is crucial when printing edge to edge. Artwork must extend beyond the finished and trim size dimensions.