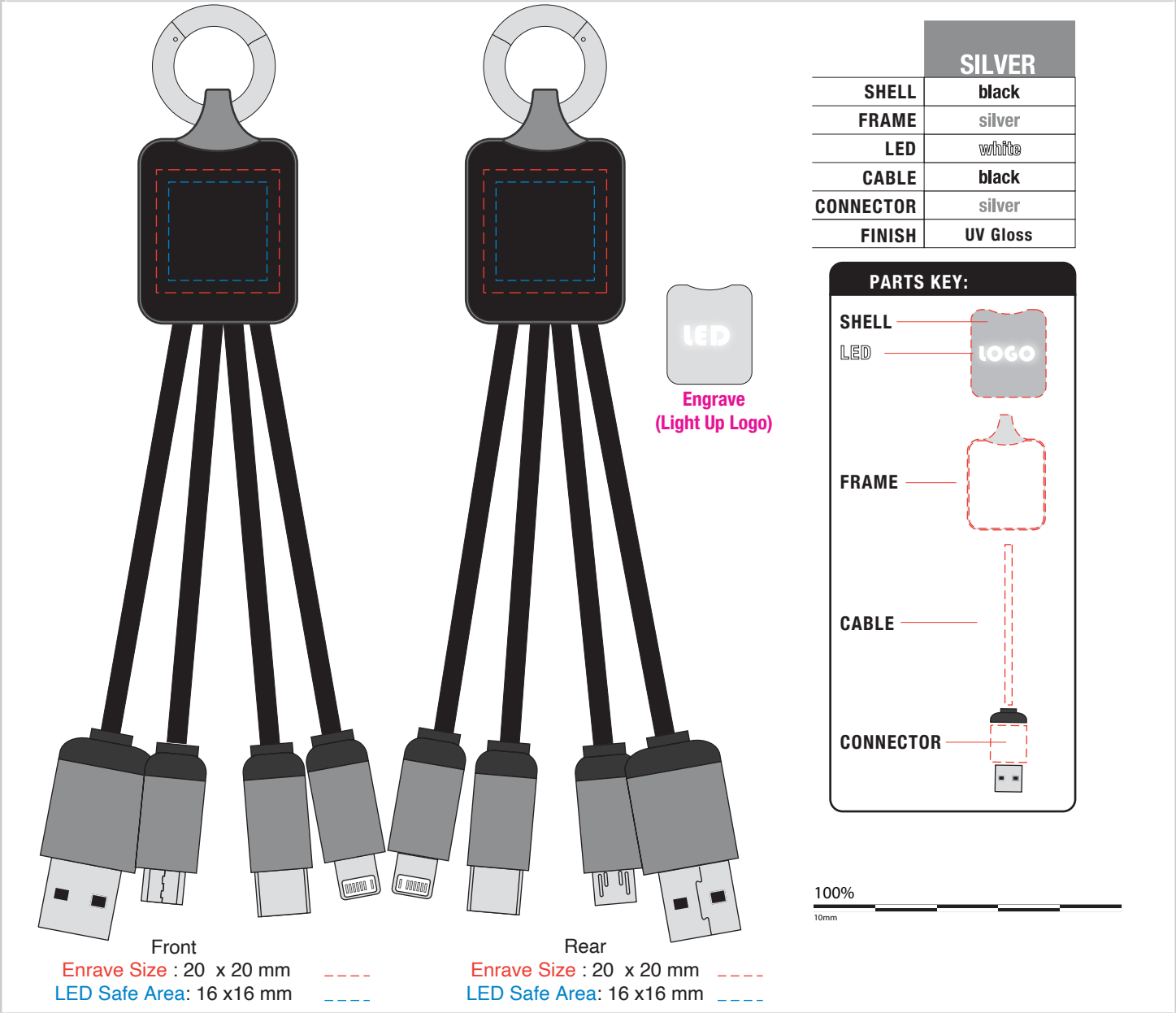


AR870A

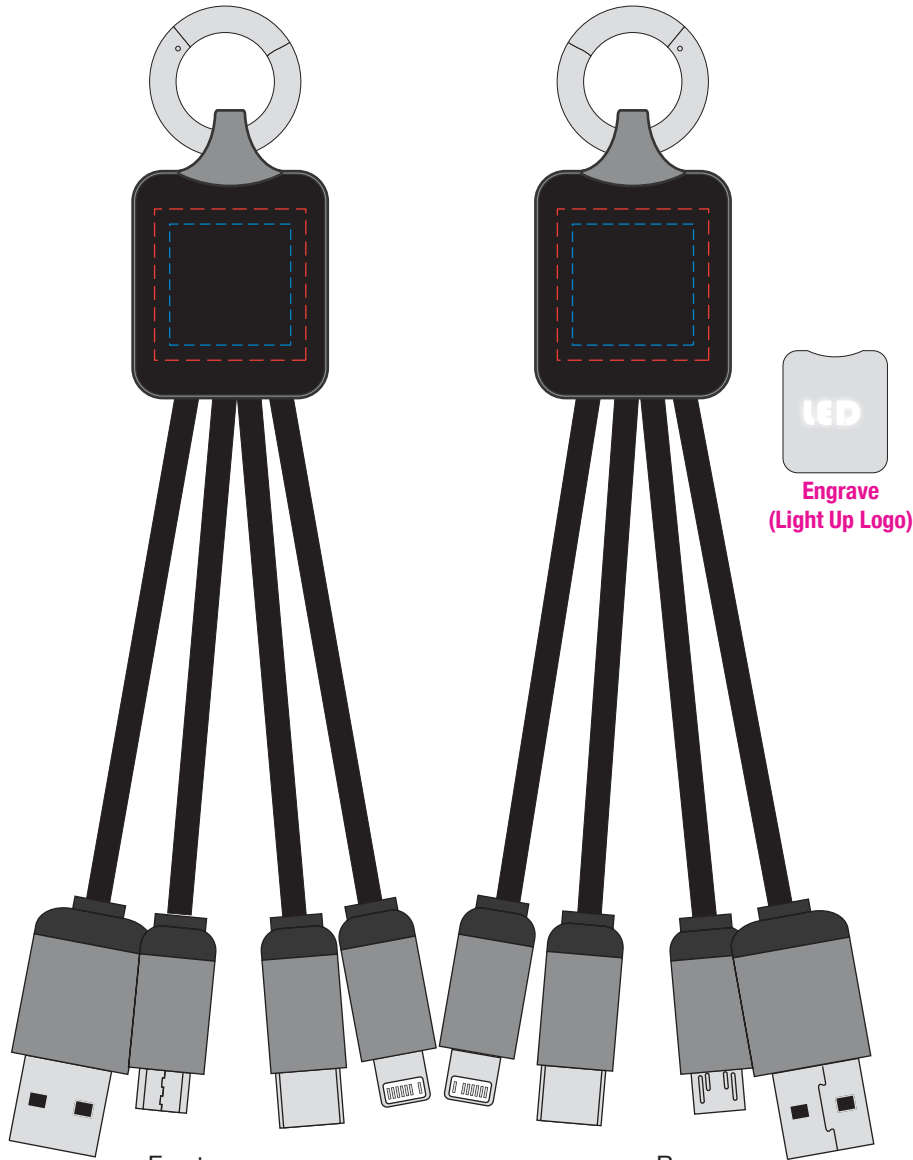
Atesso 3n1 Light Up Charge Cable - Rectangle

Branding Options: Light-Up Logo, Pad Print is an option
Product Size: Cable Head: 38 x 26 x 12.6 mm, Length: 150 mm

Colours:



Please follow these artwork guidelines • Use and supply vector-based artwork • Illustrator compatible EPS or PDF with all fonts outlined • Indicate any necessary colour details with the correct PMS colour • All Pantone colours need to be supplied as Pantone Coated (PMS C) colours • All specifics need to be "embedded" in the file, i.e. no linked artwork should be provided • Bleed is crucial when printing edge to edge. Artwork must extend beyond the finished and trim size dimensions.



Front

Rear

Engrave Size : 20 x 20 mm

LED Safe Area: 16 x 16 mm

Engrave Size : 20 x 20 mm

LED Safe Area: 16 x 16 mm

	SILVER
SHELL	black
FRAME	silver
LED	white
CABLE	black
CONNECTOR	silver
FINISH	UV Gloss

PARTS KEY:

SHELL

LED

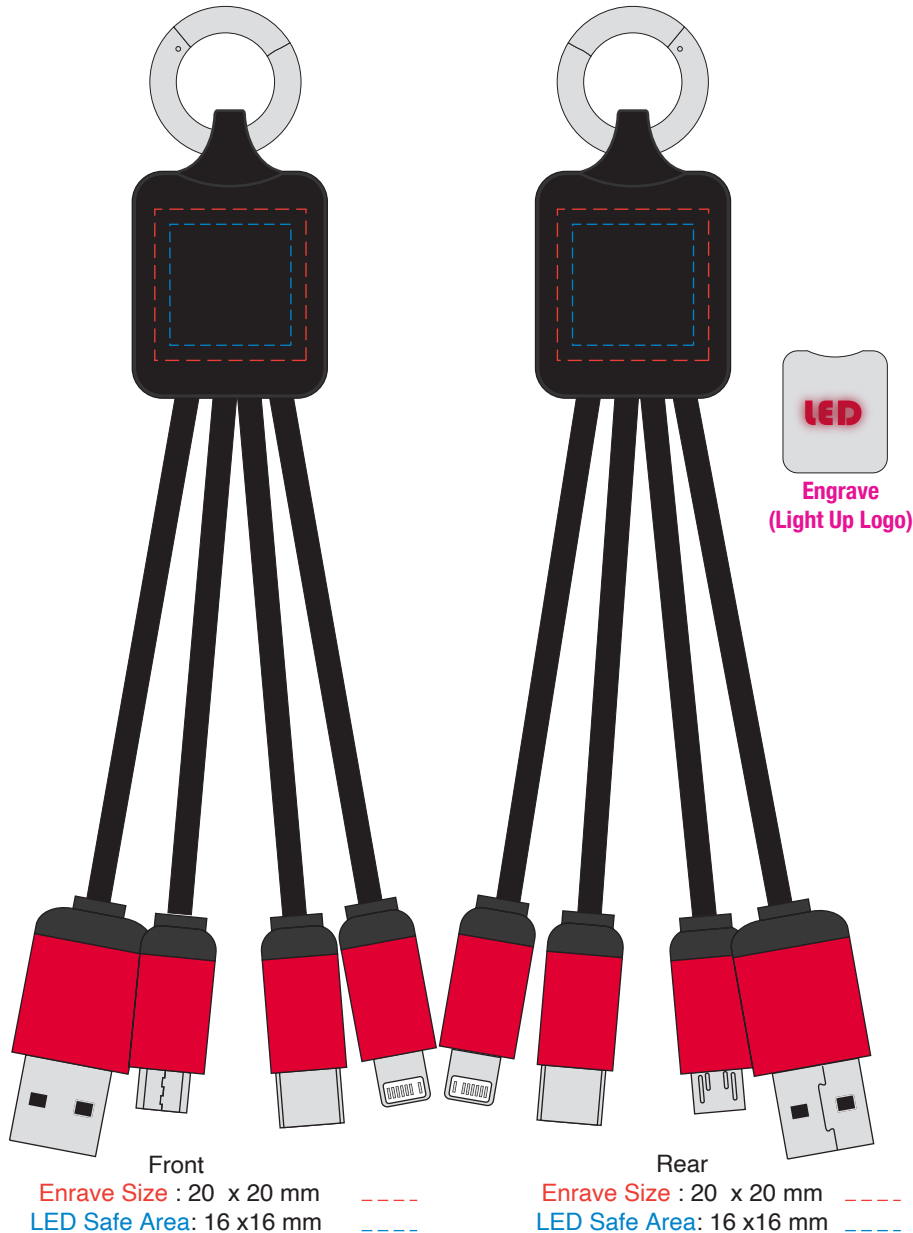
FRAME

CABLE

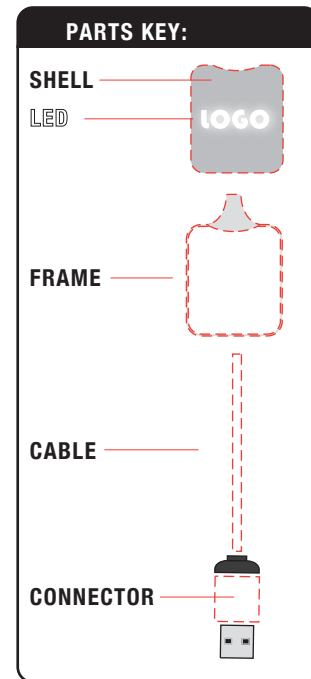
CONNECTOR

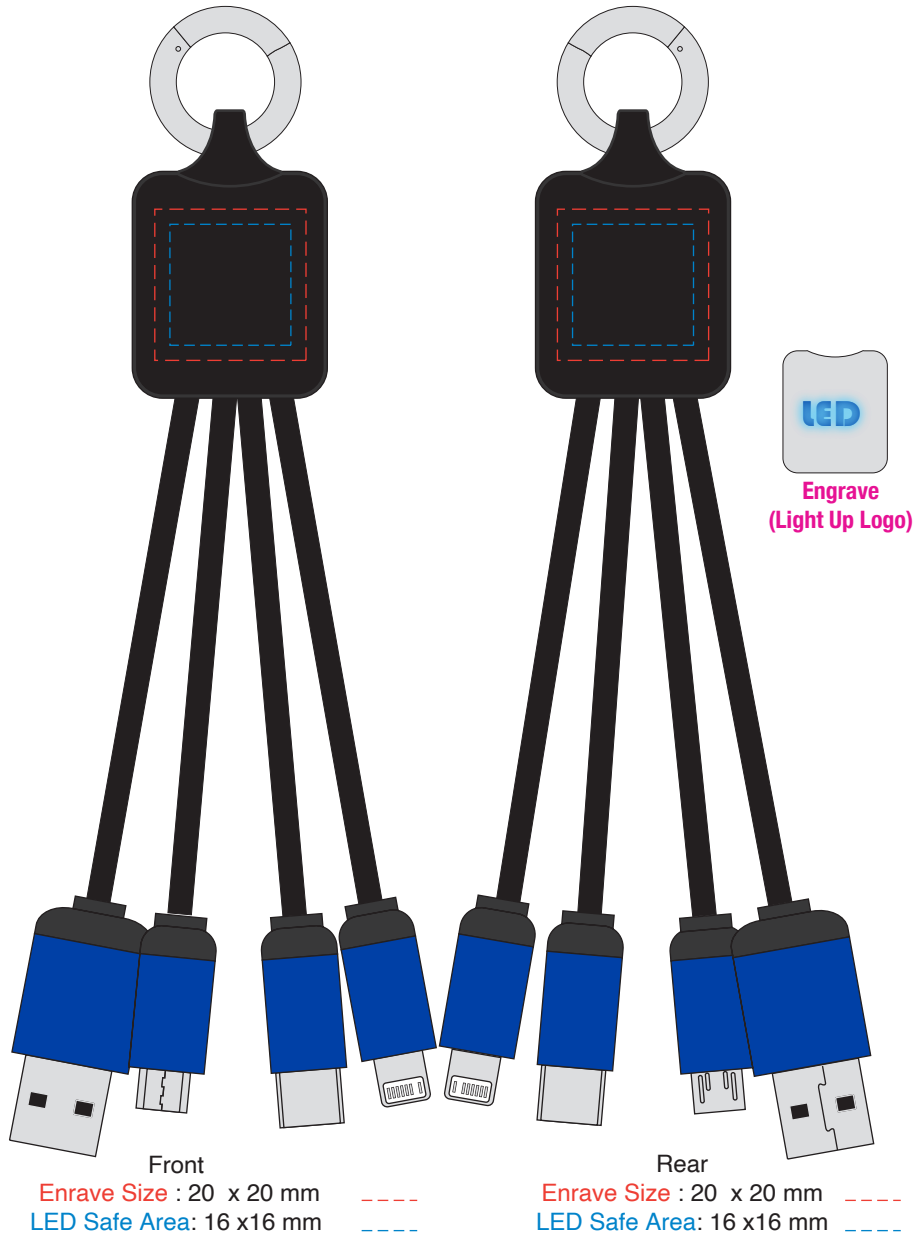
100%

10mm

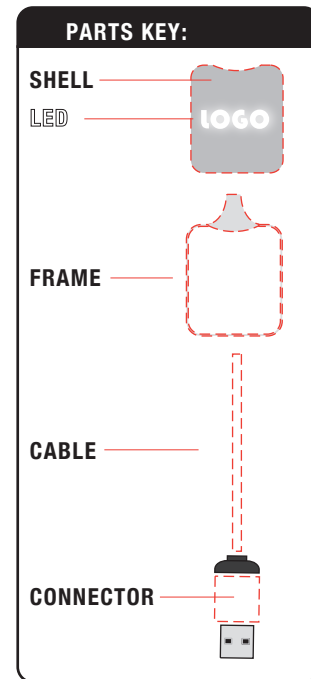


	RED	PMS 199C
SHELL	black	Closest in appearance to - not colour matched
FRAME	black	
LED	red	
CABLE	black	
CONNECTOR	red	
FINISH	UV Gloss	





	BLUE	PMS 293C
SHELL	black	Closest in appearance to - not colour matched
FRAME	black	
LED	blue	
CABLE	black	
CONNECTOR	blue	
FINISH	UV Gloss	





Front

Rear

Engrave Size : 20 x 20 mm

LED Safe Area: 16 x 16 mm

Engrave Size : 20 x 20 mm

LED Safe Area: 16 x 16 mm

ORANGE

PMS 171C

Closest in appearance to - not colour matched

SHELL	black
FRAME	black
LED	orange
CABLE	black
CONNECTOR	orange
FINISH	Rubber Coated

PARTS KEY:

SHELL

LED

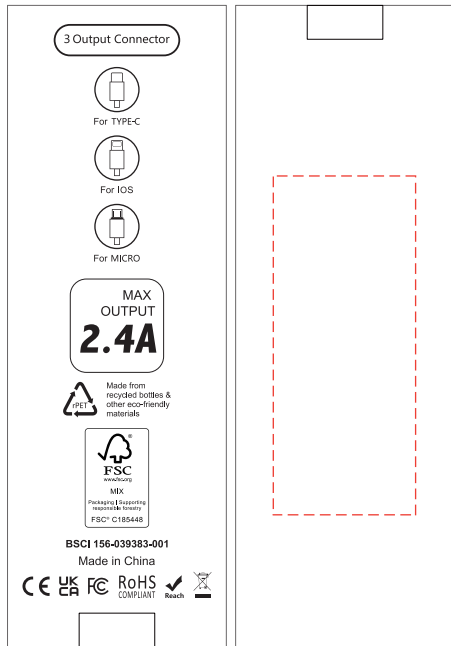
FRAME

CABLE

CONNECTOR

100%

10mm



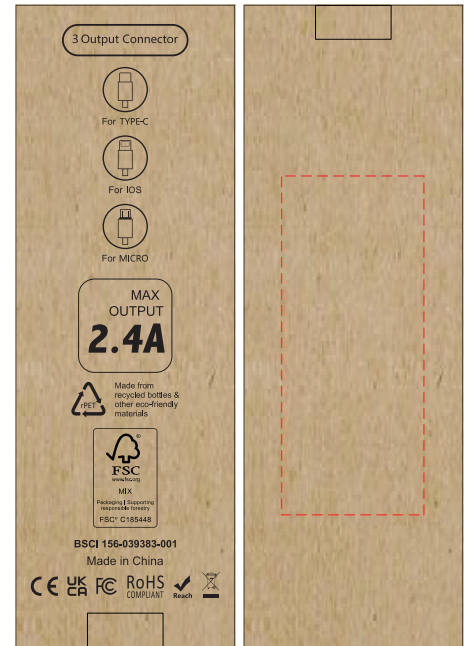
@50%



@100%

Front

Branding :
38 x 90 mm (w x h)
Pad Print (mono)
or Complimentary
Laser Engrave

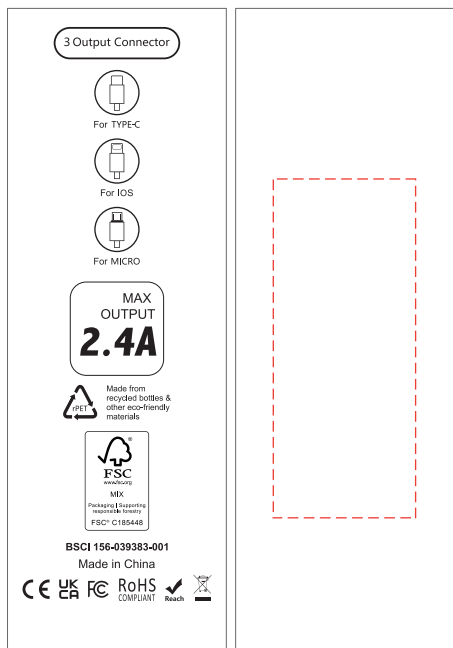


@50%

PK072

Box Dimensions

170 mm x 58 mm x12 mm



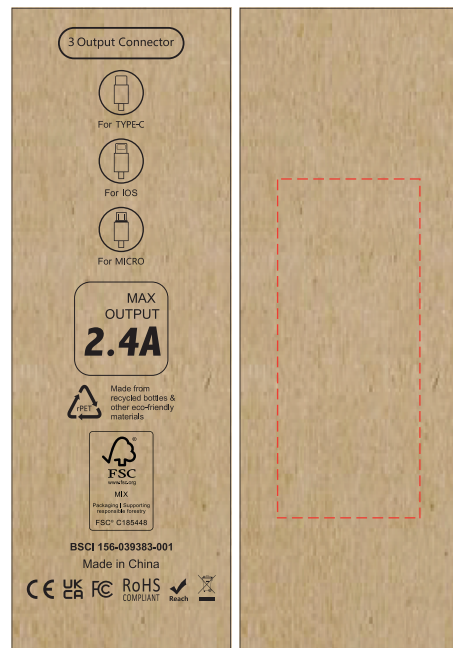
@50%



@100%

Front

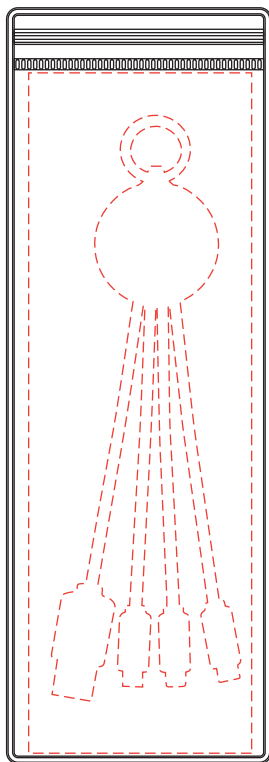
Branding :
38 x 90 mm (w x h)
Pad Print (mono)
or Complimentary
Laser Engrave



@50%

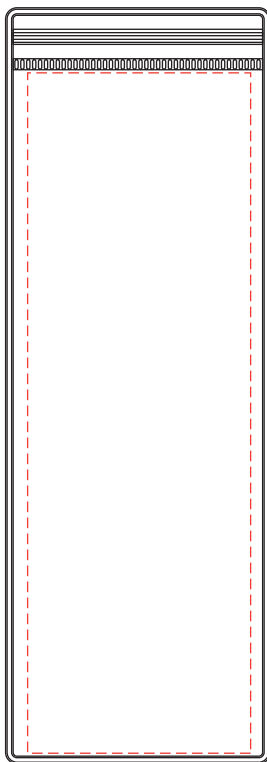
PK074

Sleeve and Sliding Tray Dimensions
170 mm x 58 mm x 17 mm



Front

Print : 59 x 180 mm
4 Colour Process
(Allow 3 mm Bleed)

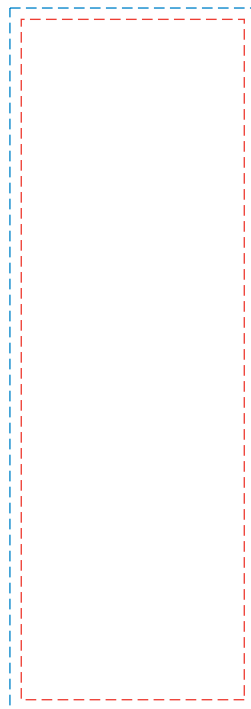


Rear

Print : 59 x 180 mm
4 Colour Process
(Allow 3 mm Bleed)

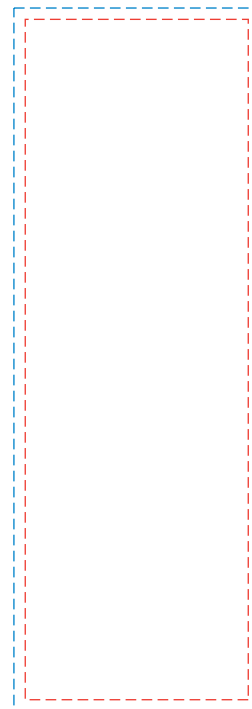
Pouch 70 x 200 mm

PK038
Press Lock Bag
70 mm x 200 mm



Front Insert

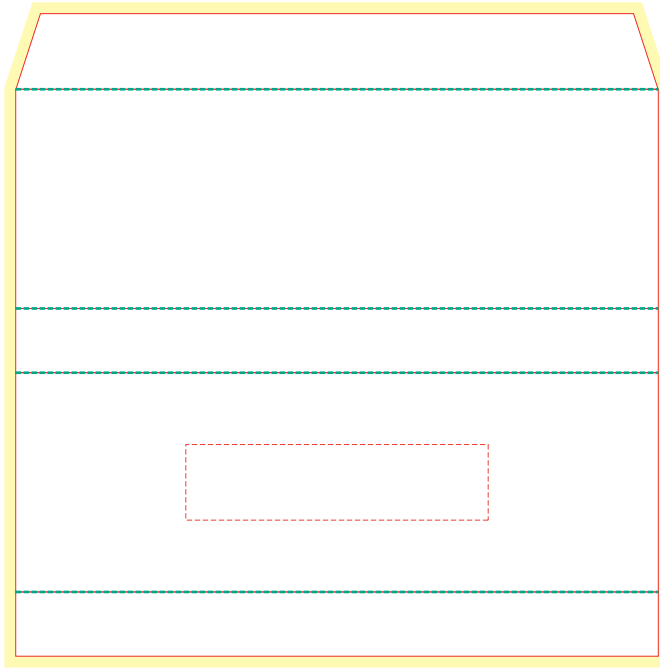
Print : 59 x 180 mm
4 Colour Process
3 mm Bleed (65 x 186mm)



Rear Insert

Print : 59 x 180 mm
4 Colour Process
3 mm Bleed (65 x 186mm)

Box Sleeve



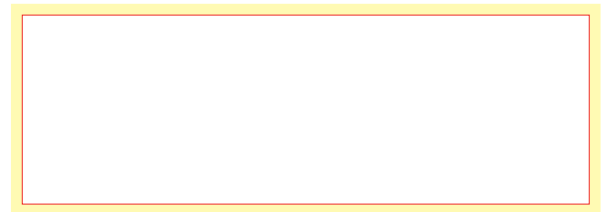
Custom Box Sleeve
170mm x 58mm x 17mm
4CP Print

Front
Print : 80 x 20mm
Foil Stamping

PK044
Slide Box Line Drawing
170mm x 58mm x 17mm.pdf



Tray Inset



Custom Box Inset
150mm x 50mm
4CP Print

— Dye Line
— Bleed (3mm)
- - - Folds