

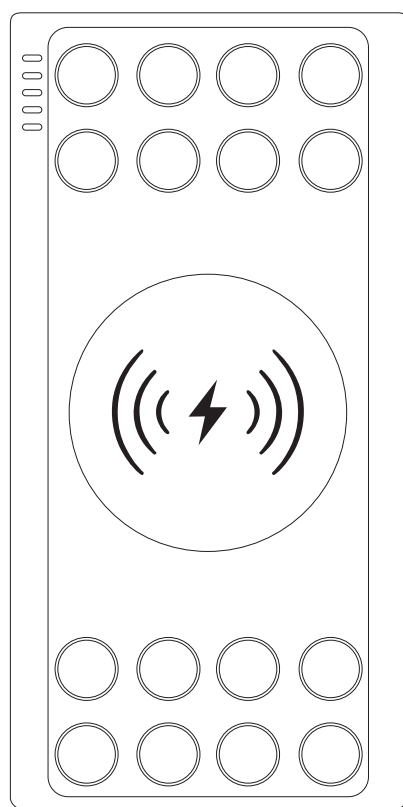
AR865

Oatley Wireless Power Bank - 10,000 mAh

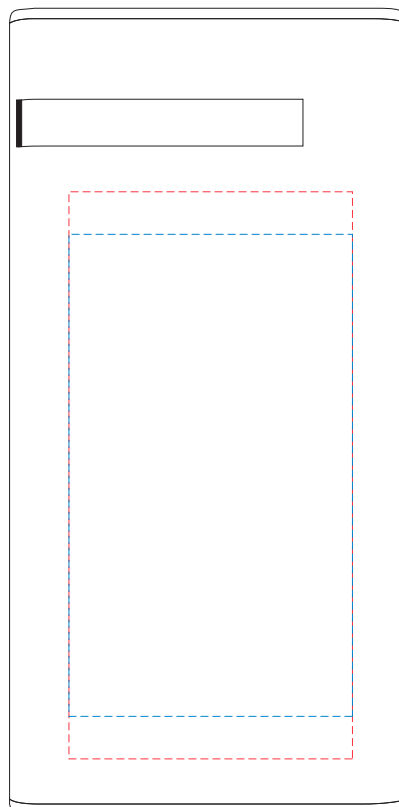
Print Process: Pad Print, 4CP Digital Print, Light-Up Logo

Product Size: 142 x 70 x 16 mm

Colours: Product Colour: Black, White



Front



Rear

Print : 50 x 100 mm - - - -
4CP Direct Digital Print
Pad Print
Print : 50 x 85 mm - - - -
Laser Light-Up



Please follow these artwork guidelines: • Use and supply vector-based artwork • Illustrator compatible EPS or PDF with all fonts outlined • Indicate any critical colour details with the correct PMS colour • All Pantone colours need to be supplied as Pantone Coated (PMS C) colours • All details need to be “embedded” in the file, i.e. no linked artwork should be provided • Bleed is crucial when printing edge to edge. Artwork must extend beyond the finished and trim size dimensions.