

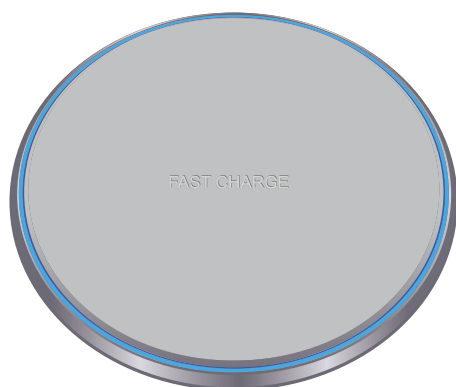
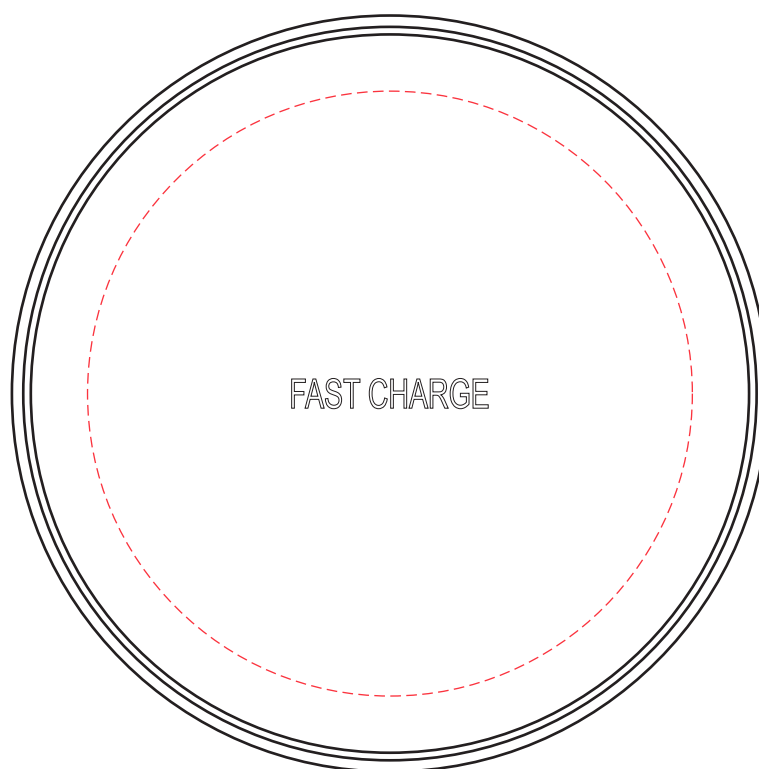
**AR852**

**Bristol Fast Wireless Charger**

**Branding Options:** Pad Print, 4CP Digital Print, Debossed

**Product Size:** 98 x 98 x 10 mm

**Colour:** Product Colour: (Aluminium base/ PU leather charge plate), Black/Black, Black/Grey, Black/Red, Black/White, Silver/Black, Silver/Grey, Silver/Red, Silver/White



Front  
Print : 80 mm Diameter  
4CP Direct Digital Print  
Pad Print



Please follow these artwork guidelines • Use and supply vector-based artwork • Illustrator compatible EPS or PDF with all fonts outlined • Indicate any necessary colour details with the correct PMS colour • All Pantone colours need to be supplied as Pantone Coated (PMS C) colours • All specifics need to be “embedded” in the file, i.e. no linked artwork should be provided • Bleed is crucial when printing edge to edge. Artwork must extend beyond the finished and trim size dimensions.

**AR852**

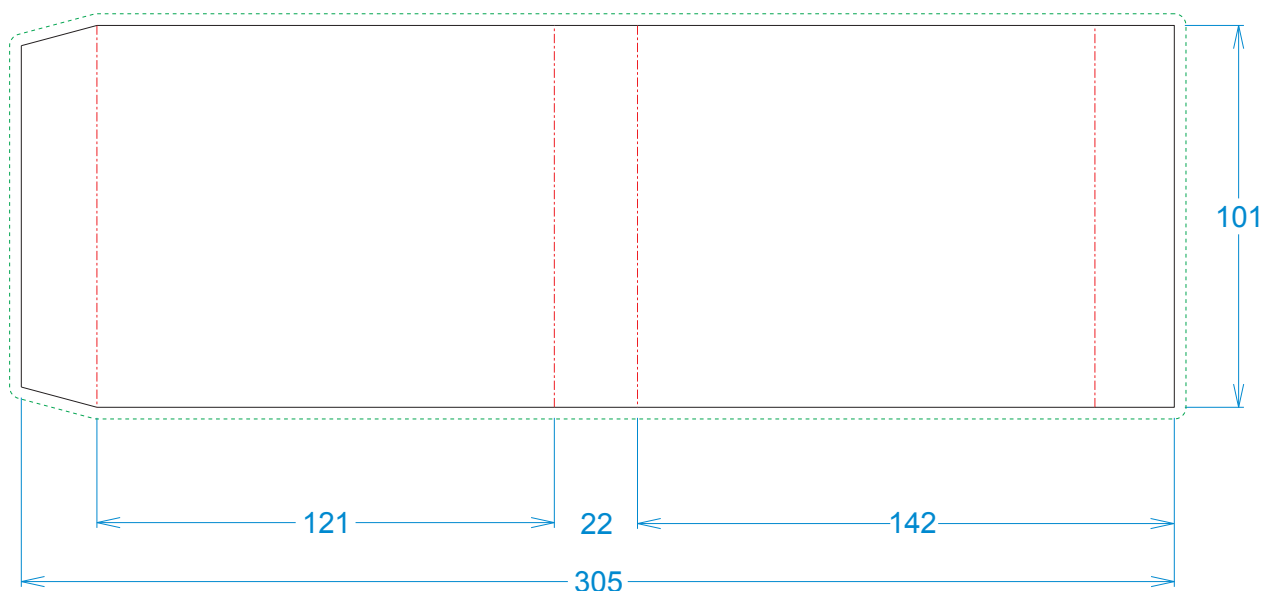
**Bristol Fast Wireless Charger**

**Branding Options:** Pad Print, 4CP Digital Print, Debossed

**Product Size:** 98 x 98 x 10 mm

**Colour:** Product Colour: (Aluminium base/ PU leather charge plate), Black/Black, Black/Grey, Black/Red, Black/White, Silver/Black, Silver/Grey, Silver/Red, Silver/White

Customised Printed Sleeve  
CS100-459



Print Area : 305mm x 101mm - 3mm bleed required on all edges  
4CP Digital Print



Please follow these artwork guidelines • Use and supply vector-based artwork • Illustrator compatible EPS or PDF with all fonts outlined • Indicate any necessary colour details with the correct PMS colour • All Pantone colours need to be supplied as Pantone Coated (PMS C) colours • All specifics need to be "embedded" in the file, i.e. no linked artwork should be provided • Bleed is crucial when printing edge to edge. Artwork must extend beyond the finished and trim size dimensions.