

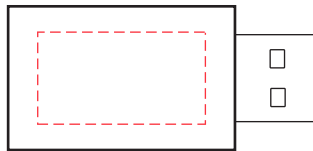
AR754

USB Data Blocker Eco

Print Process: 4CP Digital Print

Product Size: 42 x 21 x 10 mm

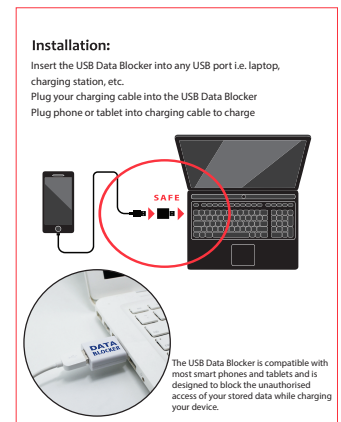
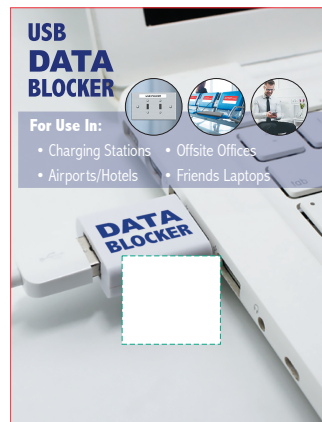
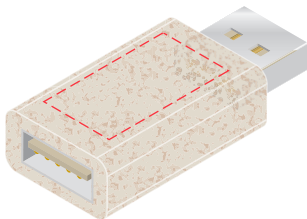
Colours: Product Colour: Raw



Front
 Branding : 22 x 12 mm (w x h)
 4CP Direct Digital Print

Please Note:
 This artwork shown is optimised for connecting on the left side as per pre-printed backing card.

Clients are free to choose their preferred orientation within the branding area.



Shown @ 50%

---- Product Position (green line non-printing)

— Trim Line (red line non-printing)



----- Extent of Branding
 (Not To Be Printed)

Please follow these artwork guidelines: • Use and supply vector-based artwork • Illustrator compatible EPS or PDF with all fonts outlined • Indicate any critical colour details with the correct PMS colour • All Pantone colours need to be supplied as Pantone Coated (PMS C) colours • All details need to be “embedded” in the file, i.e. no linked artwork should be provided • Bleed is crucial when printing edge to edge. Artwork must extend beyond the finished and trim size dimensions.

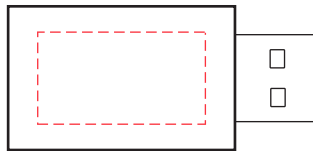
AR754

USB Data Blocker Eco

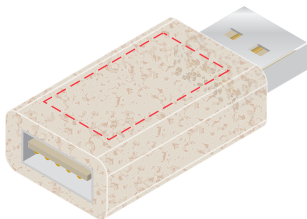
Print Process: 4CP Digital Print

Product Size: 42 x 21 x 10 mm

Colours: Product Colour: Raw

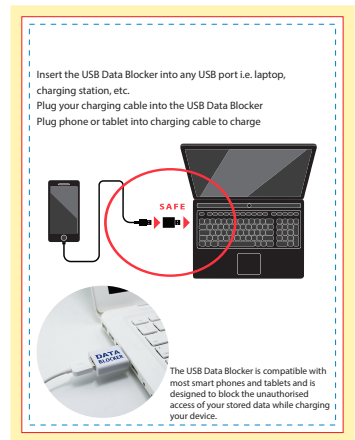
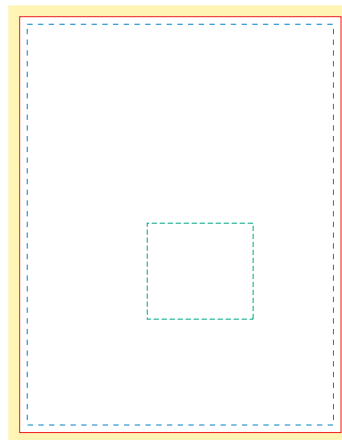


Front
 Branding : 22 x 12 mm (w x h)
 4CP Direct Digital Print



Please Note:
 This artwork shown is optimised for connecting on the left side as per pre-printed backing card.

Clients are free to choose their preferred orientation within the branding area.



Shown @ 50%

----- Extent of Branding
 (Not To Be Printed)



- Indicates Product Position (Printed)
- - - Safe Area (Non-Printing)
- Trim Line (Non-Printing)
- Bleed 3mm (Non-Printing)

Please follow these artwork guidelines: • Use and supply vector-based artwork • Illustrator compatible EPS or PDF with all fonts outlined • Indicate any critical colour details with the correct PMS colour • All Pantone colours need to be supplied as Pantone Coated (PMS C) colours • All details need to be “embedded” in the file, i.e. no linked artwork should be provided • Bleed is crucial when printing edge to edge. Artwork must extend beyond the finished and trim size dimensions.