

AR725H3

Webcam Double Razor - Strip

Branding Options: 4CP Digital Print

Product Size: 60 x 12 x 0.08 mm

Colour: Product Colour: Black, White

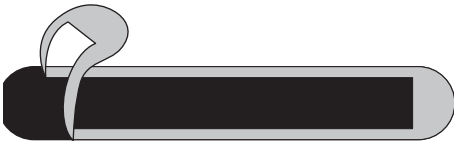


Front
 Print : 57 x 7 mm
 4CP Direct Digital

Body Colour White or Black

Installation:

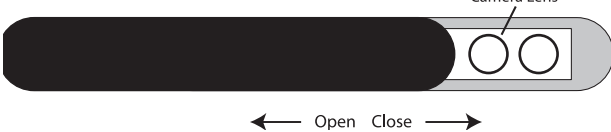
1 Remove rear adhesive strip



2 Position base cover over the camera lenses then press firmly



3 Once installed simply slide to open and close



Standard Backing Card Front
 Size : 101.6 x 152.4 mm
 4CP Print



Standard Backing Card Rear
 Size : 101.6 x 152.4 mm
 4CP Print



Please follow these artwork guidelines • Use and supply vector-based artwork • Illustrator compatible EPS or PDF with all fonts outlined • Indicate any necessary colour details with the correct PMS colour • All Pantone colours need to be supplied as Pantone Coated (PMS C) colours • All specifics need to be "embedded" in the file, i.e. no linked artwork should be provided • Bleed is crucial when printing edge to edge. Artwork must extend beyond the finished and trim size dimensions.

AR725H3

Webcam Double Razor - Strip

Branding Options: 4CP Digital Print

Product Size: 60 x 12 x 0.08 mm

Colour: Product Colour: Black, White



Please follow these artwork guidelines • Use and supply vector-based artwork • Illustrator compatible EPS or PDF with all fonts outlined • Indicate any necessary colour details with the correct PMS colour • All Pantone colours need to be supplied as Pantone Coated (PMS C) colours • All specifics need to be "embedded" in the file, i.e. no linked artwork should be provided • Bleed is crucial when printing edge to edge. Artwork must extend beyond the finished and trim size dimensions.

AR725H3

Webcam Double Razor - Strip

Branding Options: 4CP Digital Print

Product Size: 60 x 12 x 0.08 mm

Colour: Product Colour: Black, White

Now they **SEE** you...



&

After they won't!



Product Features:

- ▶ **Super Thin:** 0.8mm thick
- ▶ **Secure:** goes where you go and will not fall off whether the device is open or closed
- ▶ **Durable:** made from high-grade plastic
- ▶ **Won't Scratch:** designed to open and close without harming the camera lens

Installation:

- 1 Remove adhesive strip
- 2 Position base cover over the camera lens then press firmly
- 3 Once installed simply slide to open and close



Dual Camera Lens

If the base and rails become detached it simply snaps back into place.

ANYONE CAN WATCH or RECORD YOU

through your webcam without you ever knowing it.
 Protect your privacy today!



Highly recommend these camera covers to keep the CREEPERS OUT!
 - Ali London, England



NO chance of being spied on now! I feel a lot better...
 - Tatiana Miami, FL

WARNING units placed directly on the screen could provide a pressure point if the device is dropped or slammed closed that could damage the screen.



8 10007 58119 4

**C-Slide
 Razor Strip**

© SolPals, LLC

Please follow these artwork guidelines • Use and supply vector-based artwork • Illustrator compatible EPS or PDF with all fonts outlined • Indicate any necessary colour details with the correct PMS colour • All Pantone colours need to be supplied as Pantone Coated (PMS C) colours • All specifics need to be "embedded" in the file, i.e. no linked artwork should be provided • Bleed is crucial when printing edge to edge. Artwork must extend beyond the finished and trim size dimensions.

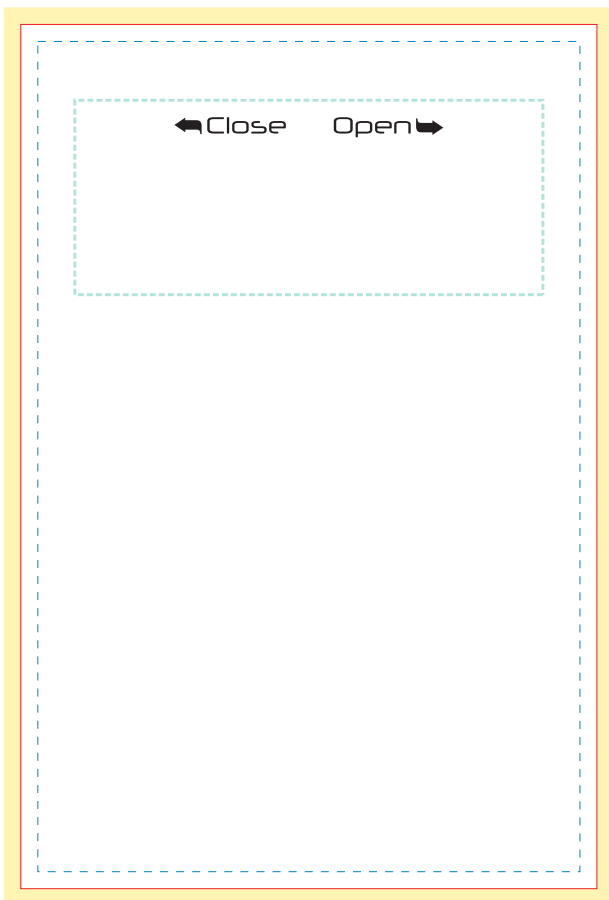
AR725H3

Webcam Double Razor - Strip

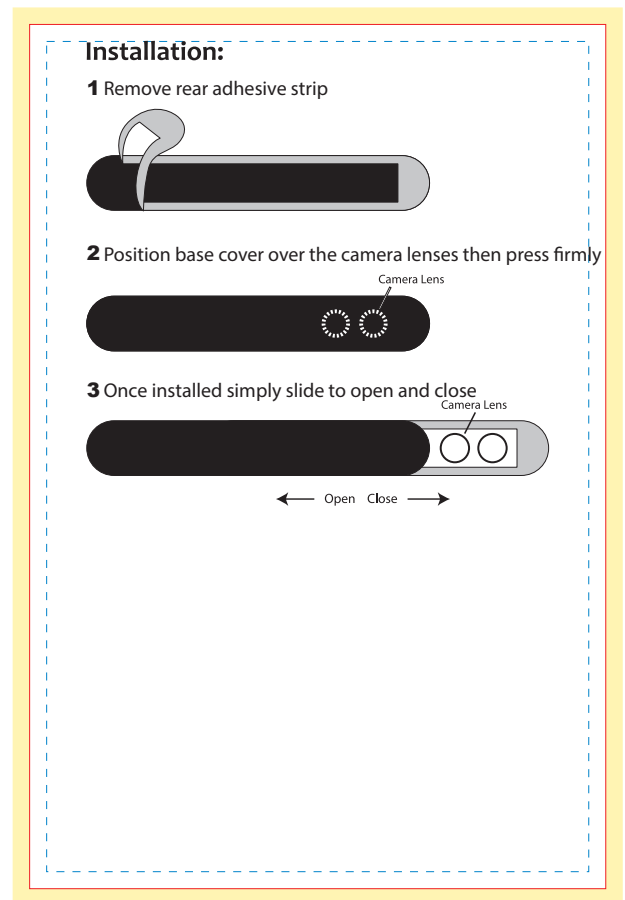
Branding Options: 4CP Digital Print

Product Size: 60 x 12 x 0.08 mm

Colour: Product Colour: Black, White



Custom Backing Card Front
 Size : 101.6 x 152.4 mm
 4CP Print



Custom Backing Card Rear
 Size : 101.6 x 152.4 mm
 4CP Print

- - - Safe Area
- Trim Line
- Bleed (3mm)
- - - - Blister Position (non-printing)



Please follow these artwork guidelines • Use and supply vector-based artwork • Illustrator compatible EPS or PDF with all fonts outlined • Indicate any necessary colour details with the correct PMS colour • All Pantone colours need to be supplied as Pantone Coated (PMS C) colours • All specifics need to be "embedded" in the file, i.e. no linked artwork should be provided • Bleed is crucial when printing edge to edge. Artwork must extend beyond the finished and trim size dimensions.

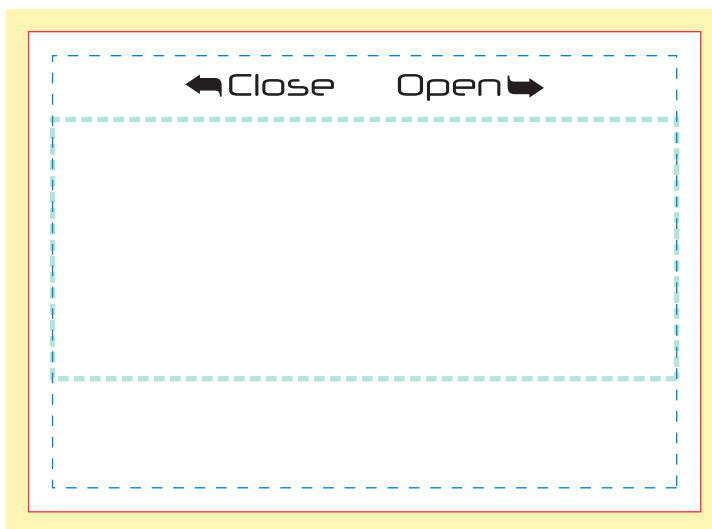
AR725H3

Webcam Double Razor - Strip

Branding Options: 4CP Digital Print

Product Size: 60 x 12 x 0.08 mm

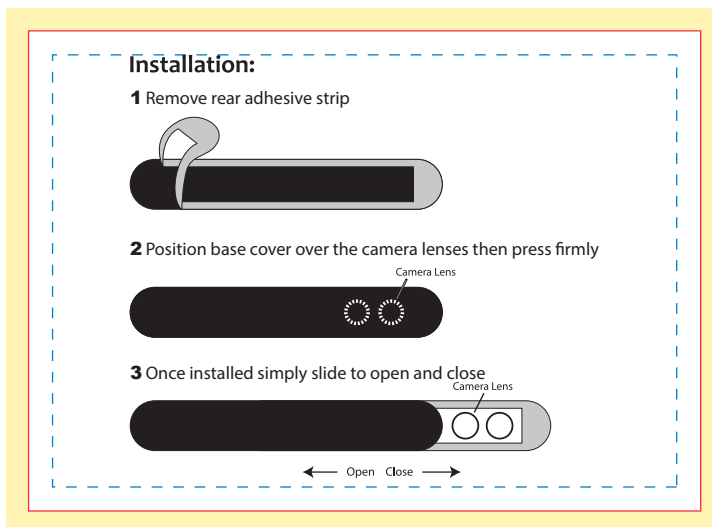
Colour: Product Colour: Black, White



Backing Card Front
 Card Print : 88.9 x 63.5 mm
 4 CP Print

Bleed of 3mm Shown

- Safe Area
- Trim Line
- Bleed (3mm)
- Blister Position (non-printing)



Backing Card Rear
 Card Print : 88.9 x 63.5 mm
 4 CP Print

Bleed of 3mm Shown



Please follow these artwork guidelines • Use and supply vector-based artwork • Illustrator compatible EPS or PDF with all fonts outlined • Indicate any necessary colour details with the correct PMS colour • All Pantone colours need to be supplied as Pantone Coated (PMS C) colours • All specifics need to be "embedded" in the file, i.e. no linked artwork should be provided • Bleed is crucial when printing edge to edge. Artwork must extend beyond the finished and trim size dimensions.