

AR725H1s

Webcam Cover Razor (Stock)

Branding Options: 4CP Digital Print

Product Size: 24 x 10 x 0.08 mm

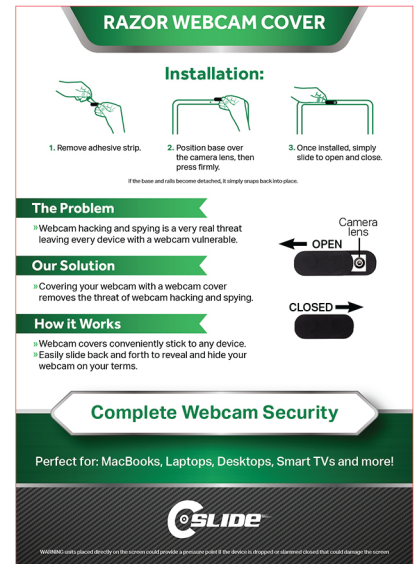
Colour: Product Colour: Black, White



Front
 Print : 21 x 7 mm
 4CP Direct Digital
 Black Body Colour



Standard Backing Card Front
 Size : A6 (105 x 148 mm)
 4CP Print



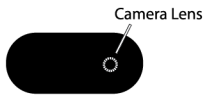
Standard Backing Card Rear
 Size : A6 (105 x 148 mm)
 4CP Print

Installation:

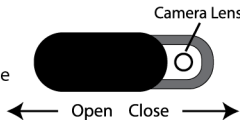
1 Remove adhesive strip



2 Position base cover over the camera lens then press firmly



3 Once installed simply slide to open and close



50%
 10mm

100%
 10mm

- Safe Area
- Trim Line
- Bleed (3mm)
- Blister Position (non-printing)

Please follow these artwork guidelines • Use and supply vector-based artwork • Illustrator compatible EPS or PDF with all fonts outlined • Indicate any necessary colour details with the correct PMS colour • All Pantone colours need to be supplied as Pantone Coated (PMS C) colours • All specifics need to be "embedded" in the file, i.e. no linked artwork should be provided • Bleed is crucial when printing edge to edge. Artwork must extend beyond the finished and trim size dimensions.

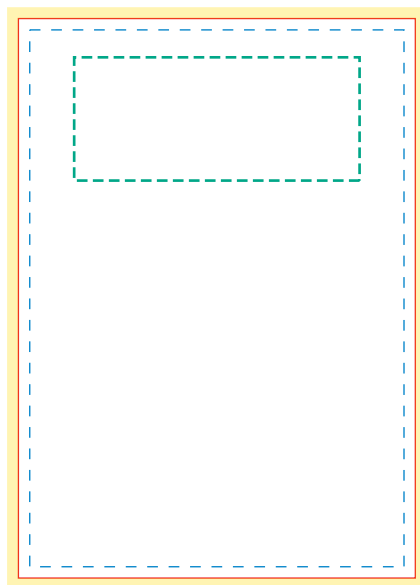
AR725H1s

Webcam Cover Razor (Stock)

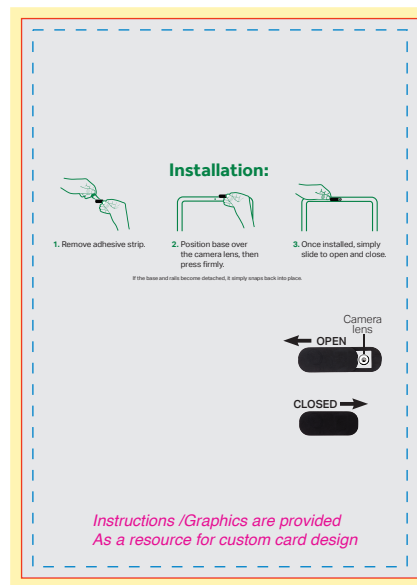
Branding Options: 4CP Digital Print

Product Size: 24 x 10 x 0.08 mm

Colour: Product Colour: Black, White



Custom Backing Card Front
 Size : A6 (105 x 148 mm)
 4CP Print



Custom Backing Card Rear
 Size : A6 (105 x 148 mm)
 4CP Print



- Text /Image Safe Area
- Trim Line
- Bleed (3mm)
- Blister Position (Non-Printing)

Please follow these artwork guidelines • Use and supply vector-based artwork • Illustrator compatible EPS or PDF with all fonts outlined • Indicate any necessary colour details with the correct PMS colour • All Pantone colours need to be supplied as Pantone Coated (PMS C) colours • All specifics need to be "embedded" in the file, i.e. no linked artwork should be provided • Bleed is crucial when printing edge to edge. Artwork must extend beyond the finished and trim size dimensions.