

AR674

Blaze Power Bank

Print Process: 4CP Light-up Insert

Product Size: 65 x 39 x 39 mm

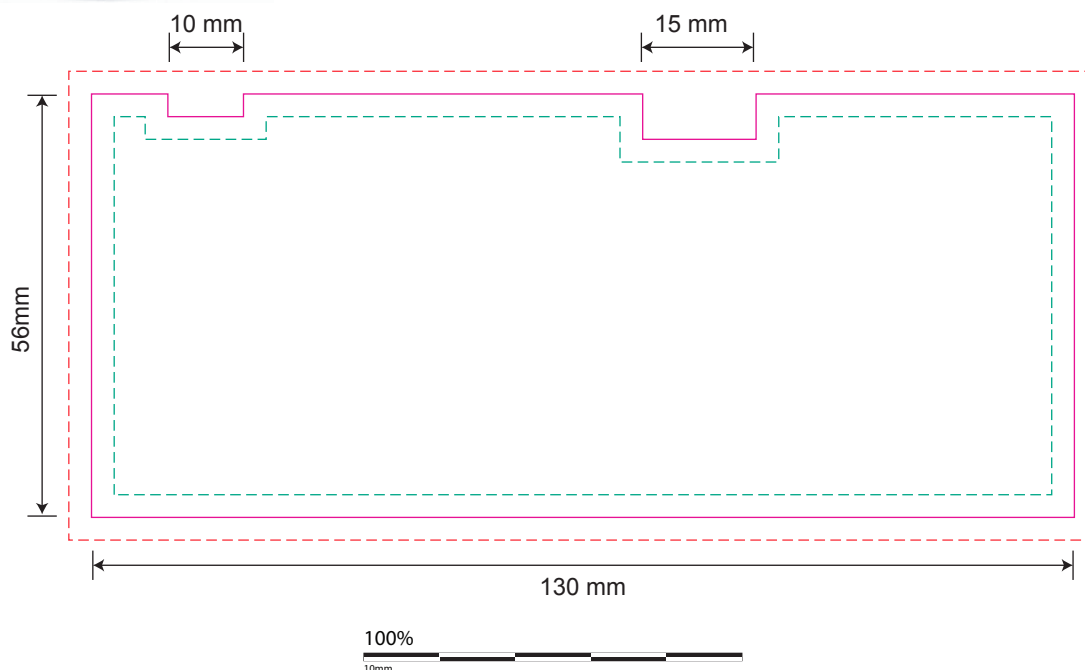
Colours: Product Colour: Customised Light-up Insert



Print size : 130 x 56 mm
1 to 4 Colour Digital Print

Supply artwork with a
3 mm Bleed on each edge

- Knife Line
- - - Text Safe
- - - 3mm Bleed
- - - Folds



Please follow these artwork guidelines: • Use and supply vector-based artwork • Illustrator compatible EPS or PDF with all fonts outlined • Indicate any critical colour details with the correct PMS colour • All Pantone colours need to be supplied as Pantone Coated (PMS C) colours • All details need to be “embedded” in the file, i.e. no linked artwork should be provided • Bleed is crucial when printing edge to edge. Artwork must extend beyond the finished and trim size dimensions.