

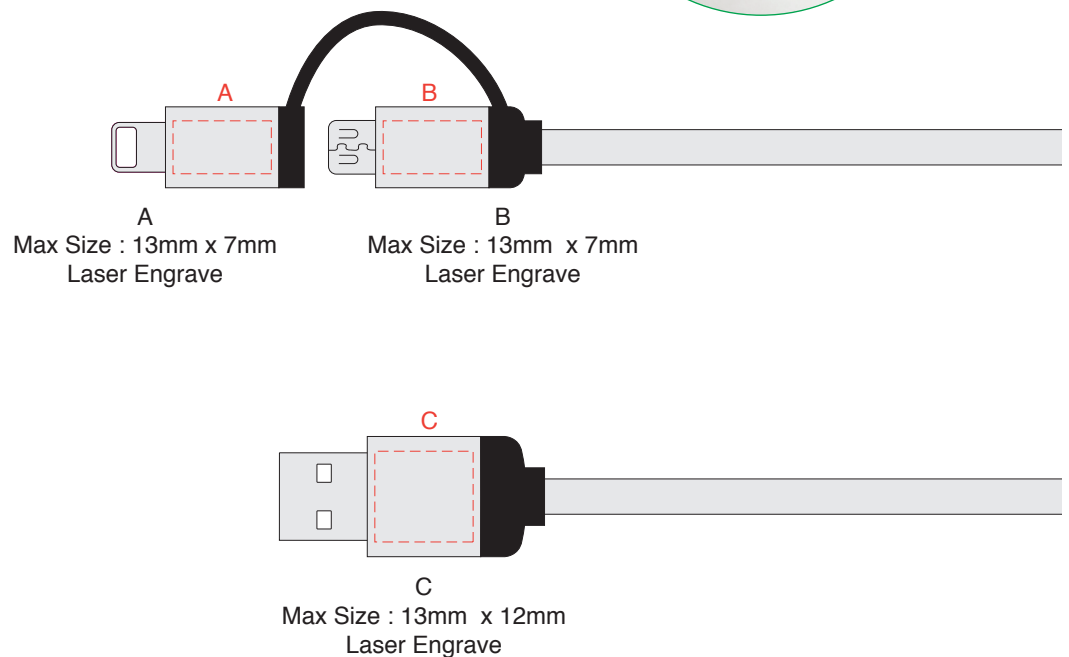
AR588

Milano 2n1 Fabric Charge & Data Cable

Print Process: Pad Print, Laser Engrave

Product Size: Connector Head - 50 x 27 x 5 mm, Length - 150 cm

Colours: Product Colour: Black/Black (Std), Black/White (Std), Blue/White (Std), Silver/Grey (MOQ-500pcs), Pink/Pink (MOQ-500pcs), PMS Colour Match (MOQ-2Kpcs)



Please follow these artwork guidelines: • Use and supply vector-based artwork • Illustrator compatible EPS or PDF with all fonts outlined • Indicate any critical colour details with the correct PMS colour • All Pantone colours need to be supplied as Pantone Coated (PMS C) colours • All details need to be “embedded” in the file, i.e. no linked artwork should be provided • Bleed is crucial when printing edge to edge. Artwork must extend beyond the finished and trim size dimensions.
















AR588

Milano 2n1 Fabric Charge & Data Cable

Print Process: Pad Print, Laser Engrave

Product Size: Connector Head - 50 x 27 x 5 mm, Length - 150 cm

Colours: Product Colour: Black/Black (Std), Black/White (Std), Blue/White (Std), Silver/Grey (MOQ-500pcs), Pink/Pink (MOQ-500pcs), PMS Colour Match (MOQ-2Kpcs)

MOQ	L.E.D.	CASE	CABLE		CONNECTOR	HEAD		
200	N/A	N/A	<i>Colour</i>		<i>Material</i>			
			BK/BK		NYLON	SL Matte		BK 
			BK/WE		NYLON	SL Shiny		WE 
			BU/WE		NYLON	GD Shiny		
500	N/A	N/A	SL/GY		NYLON	BK Matte		GY 
			PK/PK		NYLON	BU Matte		PK 
						RD Shiny		
2000	N/A	N/A	CUSTOM	CUSTOM	NYLON / TPE			

Please follow these artwork guidelines: • Use and supply vector-based artwork • Illustrator compatible EPS or PDF with all fonts outlined • Indicate any critical colour details with the correct PMS colour • All Pantone colours need to be supplied as Pantone Coated (PMS C) colours • All details need to be “embedded” in the file, i.e. no linked artwork should be provided • Bleed is crucial when printing edge to edge. Artwork must extend beyond the finished and trim size dimensions.

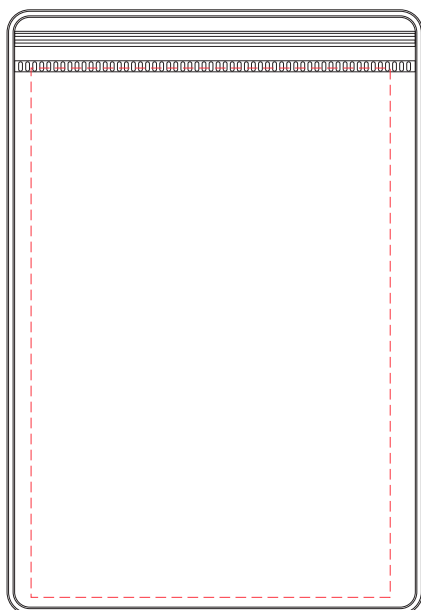
AR588

Milano 2n1 Fabric Charge & Data Cable

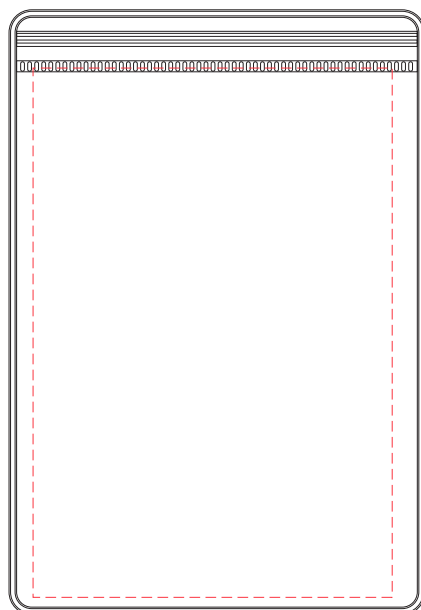
Print Process: Pad Print, Laser Engrave

Product Size: Connector Head - 50 x 27 x 5 mm, Length - 150 cm

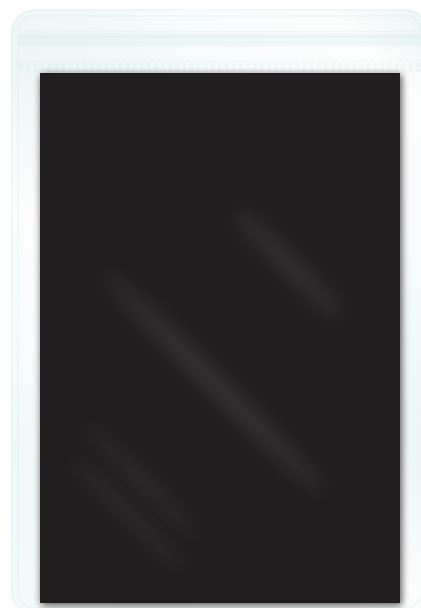
Colours: Product Colour: Black/Black (Std), Black/White (Std), Blue/White (Std), Silver/Grey (MOQ-500pcs), Pink/Pink (MOQ-500pcs), PMS Colour Match (MOQ-2Kpcs)



Front
Print : 95 x 140 mm
4 Colour Process
(3 mm Bleed)



Rear
Print : 95 x 140 mm
4 Colour Process
(3 mm Bleed)



Please follow these artwork guidelines: • Use and supply vector-based artwork • Illustrator compatible EPS or PDF with all fonts outlined • Indicate any critical colour details with the correct PMS colour • All Pantone colours need to be supplied as Pantone Coated (PMS C) colours • All details need to be “embedded” in the file, i.e. no linked artwork should be provided • Bleed is crucial when printing edge to edge. Artwork must extend beyond the finished and trim size dimensions.